



READER

design Piergiorgio and Michele Cazzaniga

Armchair, bergère and footrest with steel frame embedded in coldexpanded polyurethane foam with Visco-soft insert and seat support in cross-woven, coated rubber elastic straps. Covering in 100% polyether thermally bonded onto a polyamide velveteen backing and needle punched, resinated, non-woven polyester fibre, paired with a polyamide velveteen backing.

Swivelling or fix base, in AISI 304 Stainless Steel matt satin-finish or, for swivelling version only, in black or gunmetal grey epoxy powder coating .For the fix base only, feet with swivelling tip in ABS, chrome finish. Fabric or leather upholstery, the fabric version only is fully removable by zippers and Velcro fastenings. Seat depth: 57 cm.

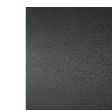
Base



Stainless Steel
with Matt Satin
Finish



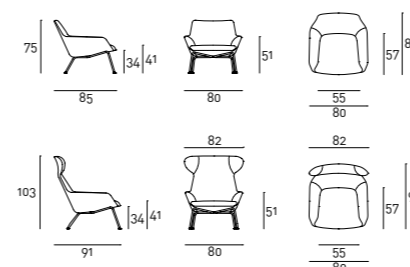
Painted Steel
RAL-K7 9017
Black



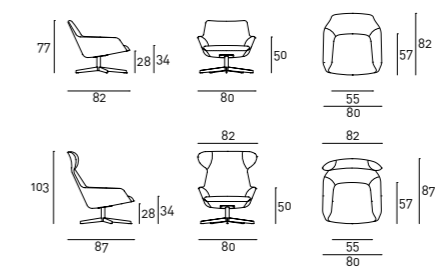
Steel with
Gunmetal
Grey Coating

Technical Drawings

Fixed Base



Swivelling Base



Footrest

